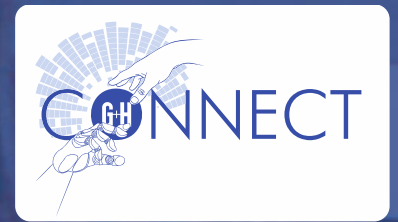




# Precision-surface and profile grinding machine



**SURFACE  
GRINDING  
MACHINE**



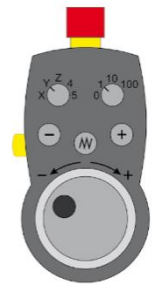
## Connectivity

- Data backup on company network
- Remote-Diagnostic
- Tele-Service
- OPC UA ready
- USB connection for data backup
- Password-protected user rights management



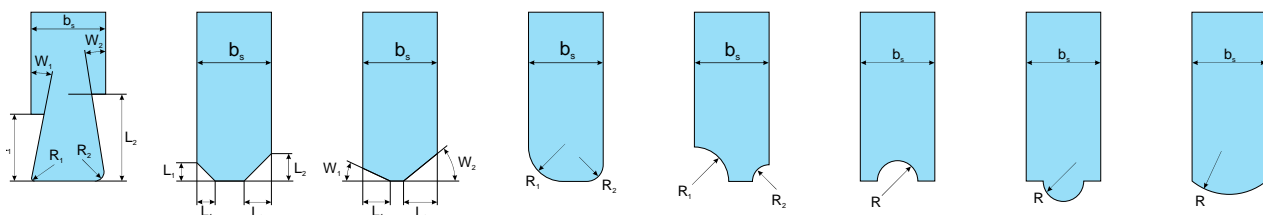
## Functions

- Surface grinding
- Grinding of sloping surfaces Y-Z
- Piercing loops
- Angular plunge-cut grinding Y-Z
- Multi-surface grinding
- Face grinding
- Numerical input of numerical values
- Accepting machine positions with teach buttons
- Vertical axis with ball screw and glass scale
- Vertical axis with ball screw and glass scale
- Workpiece data memory for 100 workpieces
- Grinding wheel data memory for 25 grinding wheels
- Chaining of up to 7 grinding cycles
- Color monitor with touch function
- Electrical handwheel on the operating satellite
- Visualization of any PDF, DWG and DXF files

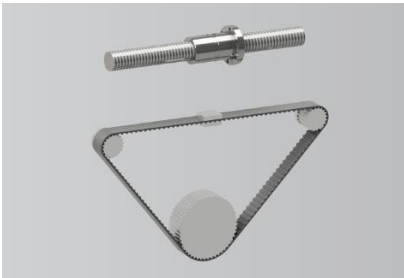


## Profiling the grinding wheels

The grinding wheels can be provided with radii or bevels.

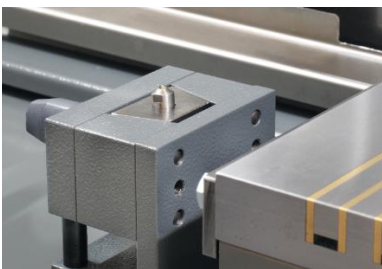


## BASIC EQUIPMENT



### Electromechanical table drive

The electromechanical table drive allows adjustable table speeds between 5 and 35000 mm/min. This makes the machine suitable for fast stroke grinding. The work table can also be moved precisely for set-up.



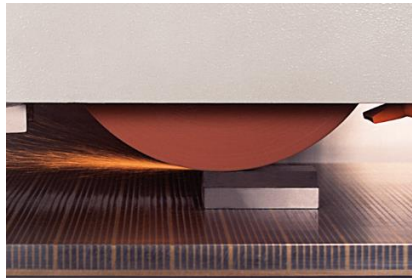
### Dressing with compensation

The automatic dressing of the grinding wheel from the table enables the highest precision. The respective dressing amounts are compensated. With the help of the fork dresser, the grinding wheels can be back-drawn and the grinding wheel edges profiled.



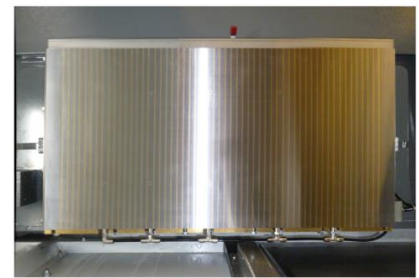
### Central lubrication

The fully automatic circulating lubrication system supplies the guideways of the axles with lubricating oil.



### Speed control

Each machine is equipped with a speed control of the grinding spindle and V-constant control as standard.



### Electro-permanent-magnetic clamping plate

The electro-permanent magnetic clamping plate is always equipped with holding force control and demagnetization. Compressed air holes are optionally possible.



### Universal paper band filter

The universal paper belt filter is used for continuous cleaning of the cooling lubricant from contaminant particles.

Electronically controlled pumps increase operating comfort and reduce energy consumption. The cooling lubricant volume flow can be conveniently adjusted at the control panel.

### Comprehensive services

- Transport preparation with transport pallet
- Commissioning and instruction on site in Germany
- Remote diagnosis\*
- Tele-service\*
- Update guarantee\*
- Technology support\*

\* for the duration of the warranty

# Technical data



Machine type	FS 420	FS 640	FS 840	FS 850	FS 1050	FS 1250	FS 860	FS 1060	FS 1260
Grinding length	400	600	800	800	1.000	1.200	800	1.000	1.200
Grinding width	200	400	400	500	500	500	600	600	600
Grinding height	300	375	375	425	425	425	425	425	425
Grinding height (Option)	---	565	565	625	625	625	625	625	625
Table load	150	600	700	1.100	1.380	1.650	1.280	1.560	1.830
Table longitudinal movement	420	650	850	850	1.050	1.250	850	1.050	1.250
Table speed	5-35.000	5-35.000	5-35.000	5-35.000	5-35.000	5-35.000	5-35.000	5-35.000	5-35.000
Distance table to grinding spindle	110 – 415	140 – 525	140 – 525	180 – 625	180 – 625	180 – 625	180 – 625	180 – 625	180 – 625
Distance table to grinding spindle (Option)	---	140 – 715	140 – 715	180 – 825	180 – 825	140 – 825	180 – 825	180 – 825	180 – 825
Vertical speed	50 – 4.000	50 – 4.000	50 – 4.000	50 – 4.000	50 – 4.000	50 – 4.000	50 – 4.000	50 – 4.000	50 – 4.000
Transversal movement (max.)	200	400	400	500	500	500	600	600	600
Transversal speed	50 – 4.000	50 – 4.000	50 – 4.000	50 – 4.000	50 – 4.000	50 – 4.000	50 – 4.000	50 – 4.000	50 – 4.000
Power of grinding spindle motor	3	5	5	11	11	11	11	11	11
Power of grinding spindle motor (Option)	7	9	9	15	15	15	15	15	15
Cutting speed	32	32	32	32	32	32	32	32	32
Cutting speed (Option)	50	50	50	50	50	50	50	50	50
Grinding wheel, standard	225x25x51	300x50x76,2	300x50x76,2	400x100x127	400x100x127	400x100x127	400x100x127	400x100x127	400x100x127

Technical modifications reserved.